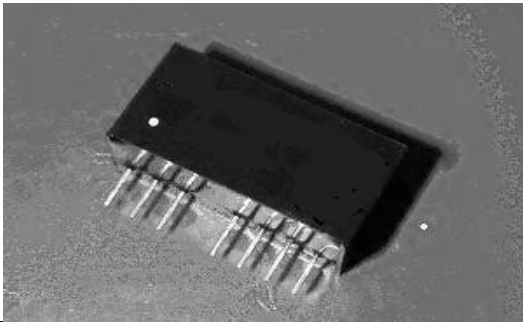


# International Coil, Inc. ICI27D SERIES

## 2Watt Single Output Regulated Isolation 1000vdc Dc-Dc Converter



### FEATURES:

- 2:1 Wide Input Voltages Range
- Efficiency To 80%
- UL 94V-0 Package Material
- Low Ripple And Noise
- Continuous Short Circuit Protection With Current Foldback.
- MTBF:>3,500,000 hrs • Operating Temperature:-40°C TO +85°C



Specifications typical at TA=25°C, nominal input voltage and rated output current unless otherwise specified

Part Number	Input Voltage Range	Output Voltage Range	Output Current	Efficiency
	Vdc	Vdc	mA	%TYP
ICI27D-05S05RNL	5-9	5	400	65
ICI27D-05S09RNL	5-9	9	222	70
ICI27D-05S12RNL	5-9	12	167	70
ICI27D-05S15RNL	5-9	15	133	70
ICI27D-12S05RNL	9-18	5	400	70
ICI27D-12S09RNL	9-18	9	222	80
ICI27D-12S12RNL	9-18	12	167	80
ICI27D-12S15RNL	9-18	15	133	80
ICI27D-24S03RNL	18-36	3.3	600	70
ICI27D-24S05RNL	18-36	5	400	75
ICI27D-24S09RNL	18-36	9	222	80
ICI27D-24S12RNL	18-36	12	167	80
ICI27D-24S15RNL	18-36	15	133	80
ICI27D-48S05RNL	36-72	5	400	70
ICI27D-48S09RNL	36-72	9	222	80
ICI27D-48S12RNL	36-72	12	167	80
ICI27D-48S15RNL	36-72	15	133	80

### Input Specifications

Parameters	Conditions	Min	Typ	Max	Units
Voltage Types				2:1	
Filter	Capacitor				

### Output Specifications

Parameters	Conditions	Min	Typ	Max	Units
Voltage Tolerance				±3	%
Short Circuit Protection	Continuous				
Line Regulation	Regulated			0.5	%

%Load Regulation Regulated

Ripple & Noise	Output: 3.3-9V TYPES BW=DC To 20MHz			100	mVp-p
Ripple & Noise	Output: 12-15V TYPES BW=DC To 20MHz			1% of Vout	mVp-p
Transient response setting time	50% load step change		350		us

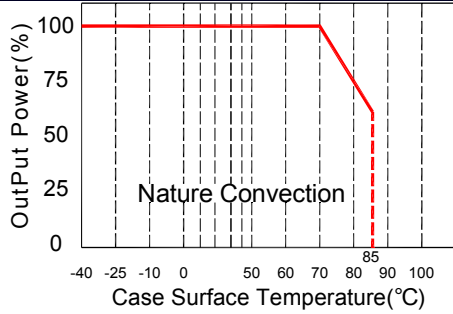
### General Specifications

Parameters	Conditions	Min	Typ	Max	Units
Isolation Resistance	500Vdc	1000			MΩ
Switfingfrequency			100		KHz
Operating Temperature		-40		85	°C
Humidity	Non Condensing			95	%
Cooling	Free air Convection				
Case material	DAP				
Weight			4.5		g
Dimensions			21.8X9.2X11.1		mm

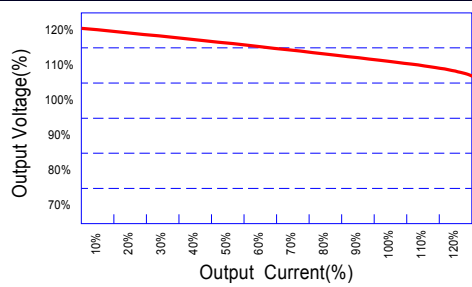
# International Coil, Inc. ICI27D SERIES

## 2Watt Single Output Regulated Isolation 1000vdc Dc-Dc Converter

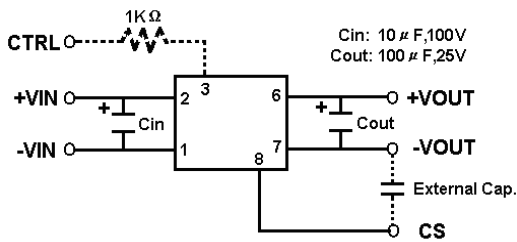
### Temperature Derating Graph



### Tolerance Envelope Graph

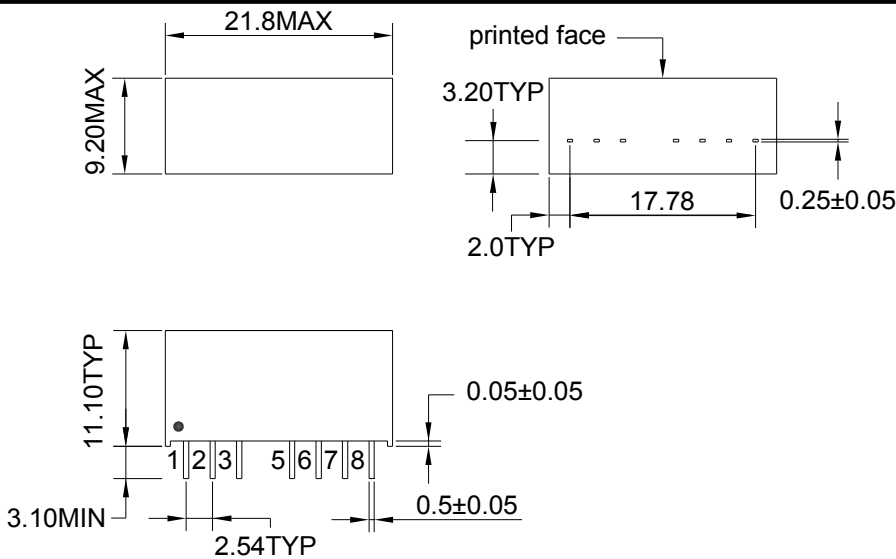


### External Circuit



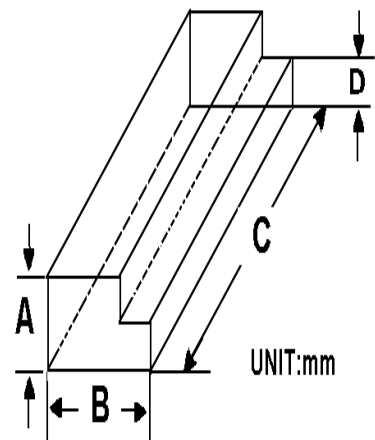
### Part Number

### Markings and Dimensions



UNIT : mm TYP tolerances are ±0.5

### Packaging



### PIN Connection

PIN	1	2	3	4	5	6	7	8
Single	-Vin	+Vin	Ctrl-Control input can (can be left open)	No PIN	NE-No external connection allowed	+Vout	-Vout	CS Optional External capacitor