



## ICISPI POWER INDUCTOR

SMT Power Inductors

Features:

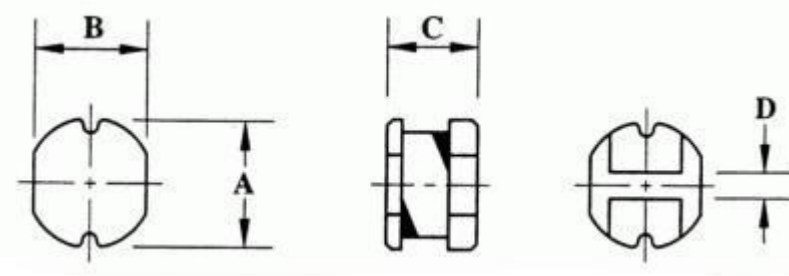


1. The SMD power inductors are offered in a wide variety of sizes and values.

2. All component volume is used as winding or magnetic media.

3. The top surface is ideal for pick and place surface mount equipment.

### MARKINGS AND DIMENSIONS



- **A: Series**
- **B: Outside Diameter: mm**
- **C: Body High: mm**
- **D: Inductance (uH)**
- **E : Tolerance**
- **K=+/-10%, L=+/-15%, M=+/-20%**
- **NL : RoHS Version**

Dimension: mm

Unless otherwise specified, all tolerances are +/-0.25

TYPE	A	B	C	D
ICISPI-0403NL	4.5+/-0.3	4.0+/-0.3	3.2+/-0.3	1.2 TYPE
ICISPI-0504NL	5.8+/-0.3	5.2+/-0.3	4.5+/-0.4	1.3 TYPE
ICISPI-0703NL	7.8+/-0.3	7.0+/-0.3	3.5+/-0.5	2.1 TYPE
ICISPI-0705NL	7.8+/-0.3	7.0+/-0.3	5.0+/-0.5	2.1 TYPE
ICISPI-1004NL	10+/-0.3	9.0+/-0.3	4.2+/-0.5	2.1 TYPE
ICISPI-1054NL	10+/-0.4	9.0+/-0.4	5.4+/-0.4	2.1 TYPE